

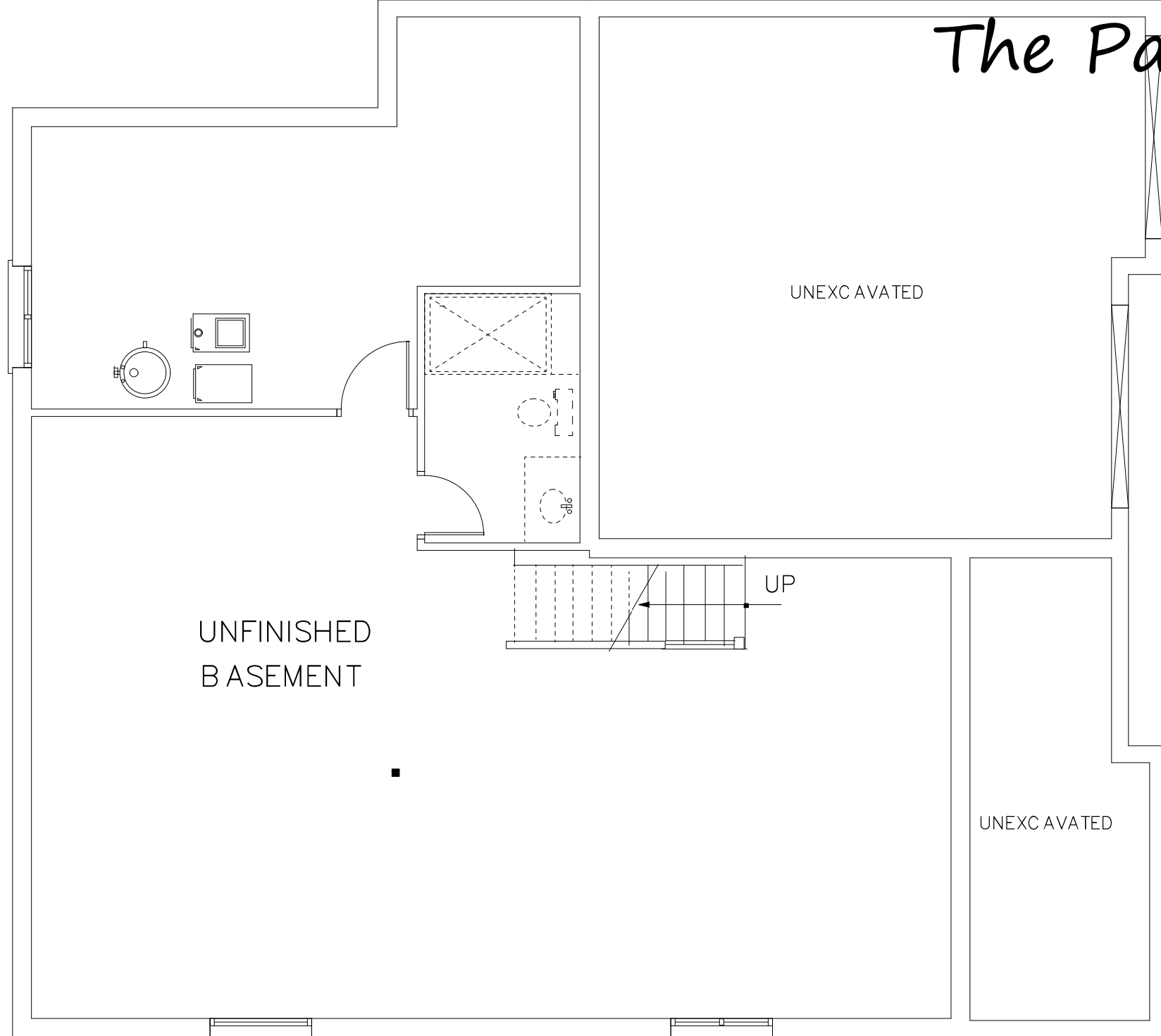
The Palmer



Two-storey Upper A: 2,185 sq ft; 3 bedrooms, 2.5 bathrooms

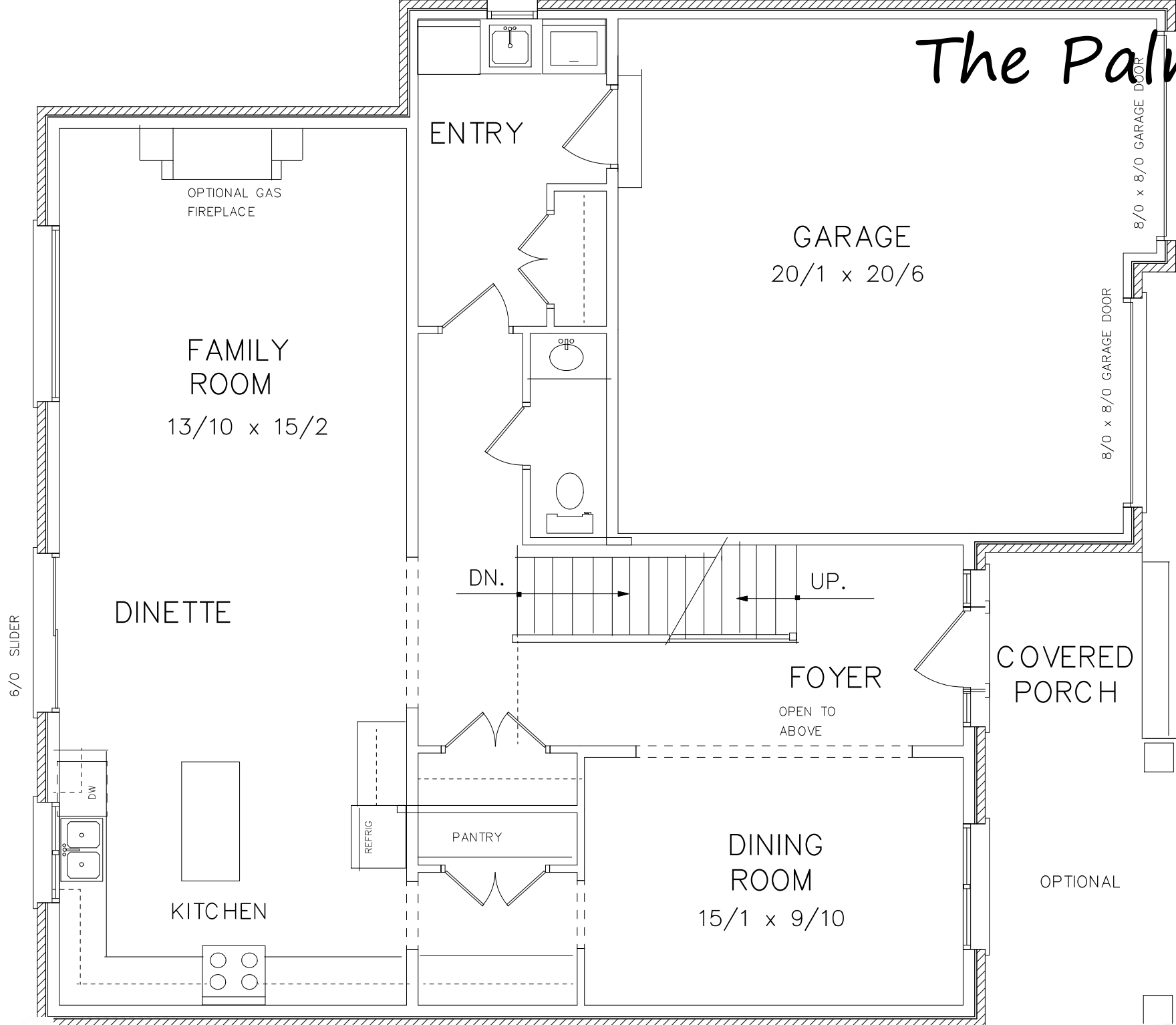
Two-storey Upper B: 2,278 sq ft; 4 bedrooms, 2.5 bathrooms

The Palmer



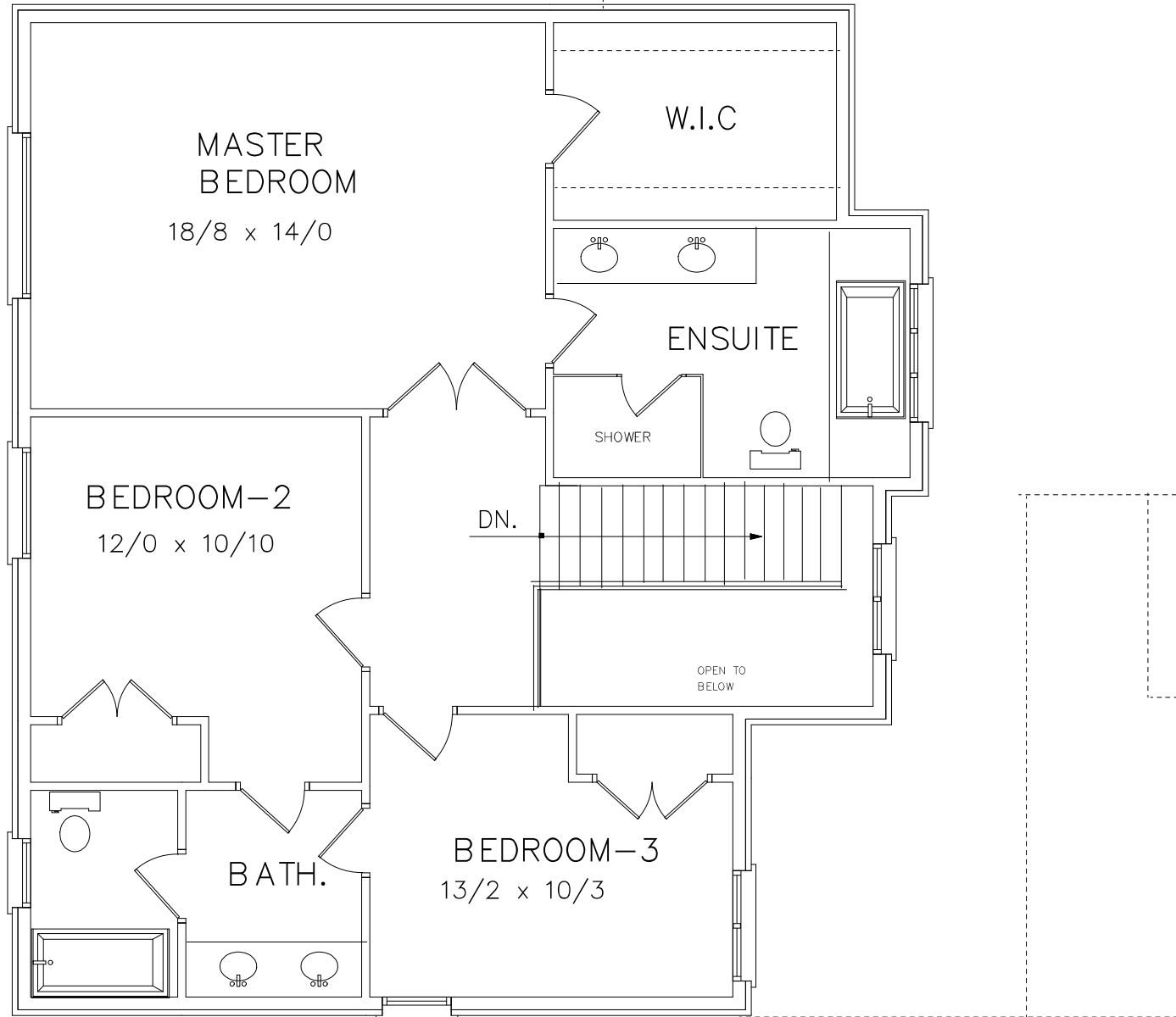
BASEMENT FLOOR PLAN

The Palmer



MAIN FLOOR PLAN

The Palmer

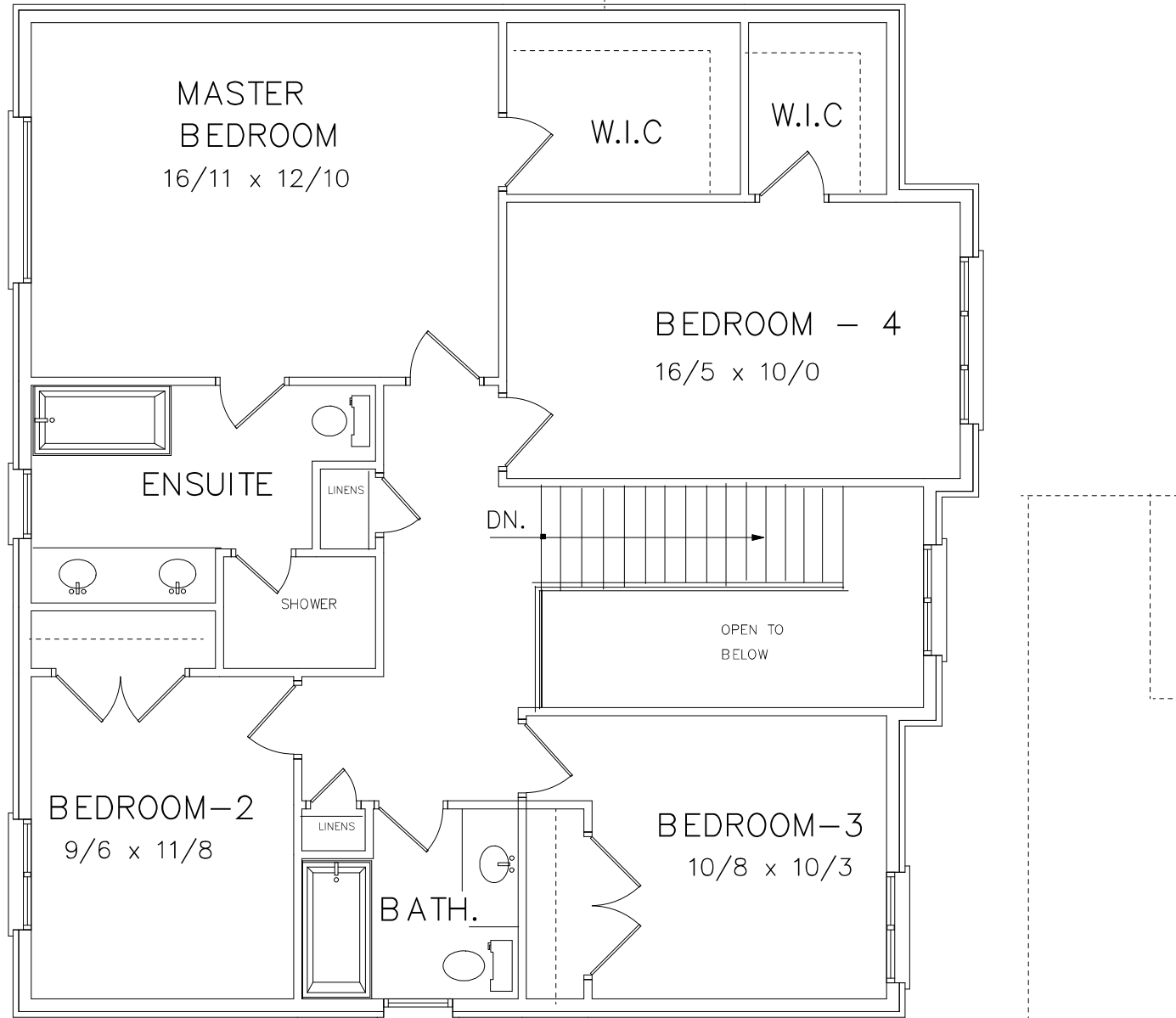


UPPER FLOOR PLAN - A

| | |
|----------------|-------------------|
| MAIN FLOOR = | 1172 sq.ft |
| UPPER FLOOR = | 1013 sq.ft |
| TOTAL = | 2185 sq.ft |



The Palmer



UPPER FLOOR PLAN - B

| | |
|---------------|------------|
| MAIN FLOOR = | 1172 sq.ft |
| UPPER FLOOR = | 1106 sq.ft |
| TOTAL = | 2278 sq.ft |