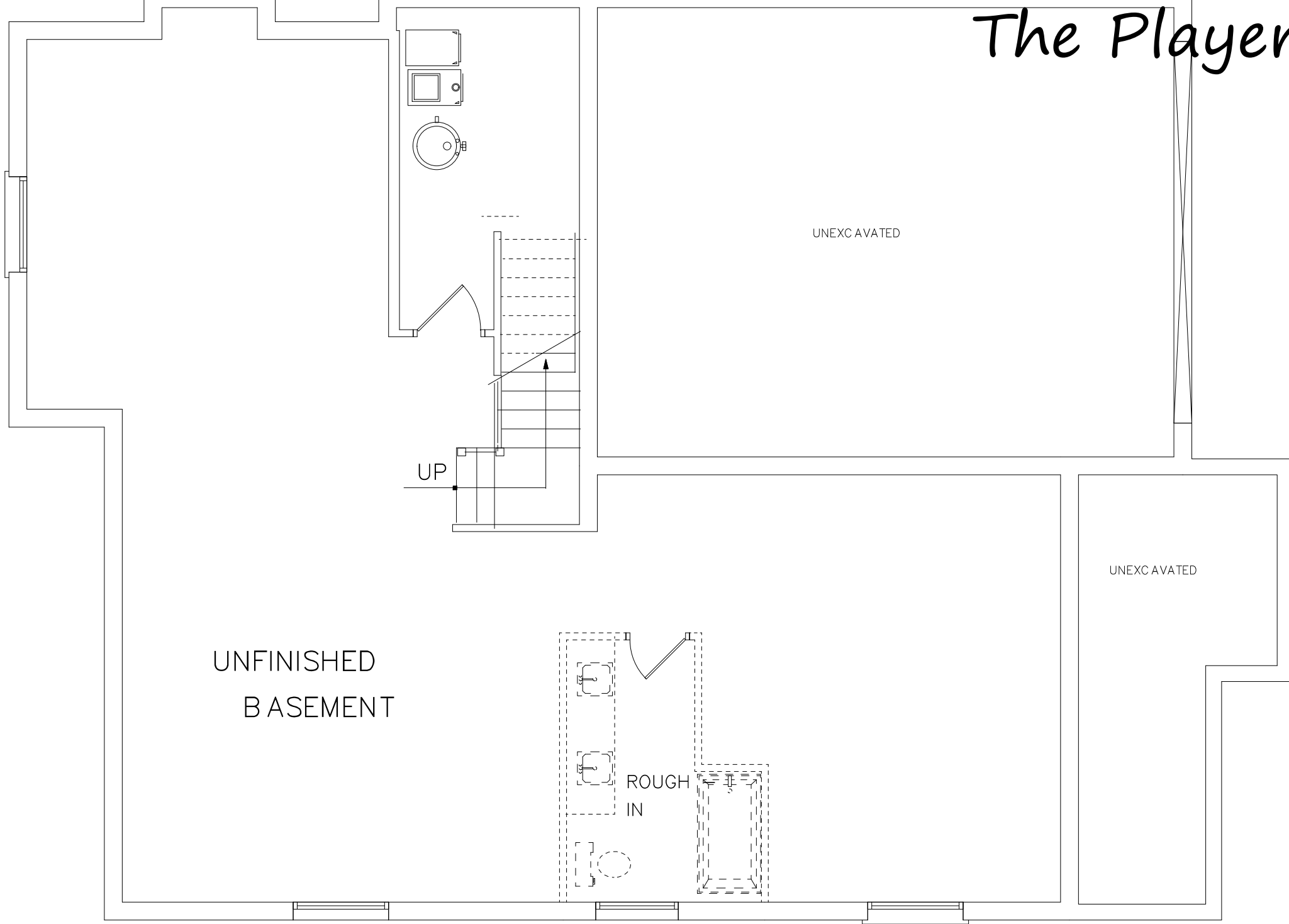


The Player



Two-storey 2,565 sq ft; 4 bedrooms, 3.5 bathrooms

The Player



UNFINISHED
BASEMENT

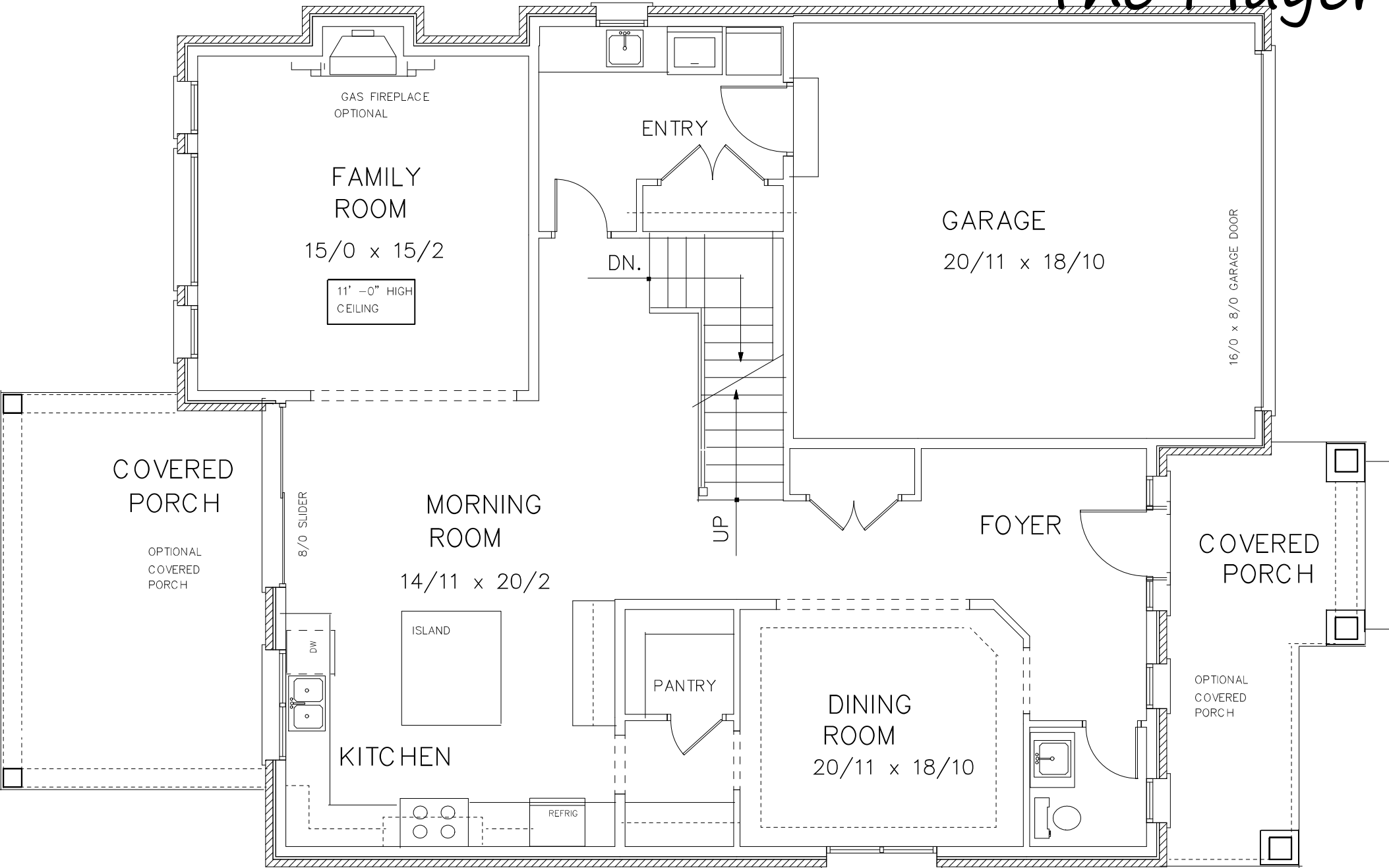
UNEXCAVATED

UNEXCAVATED

ROUGH
IN

BASEMENT FLOOR PLAN

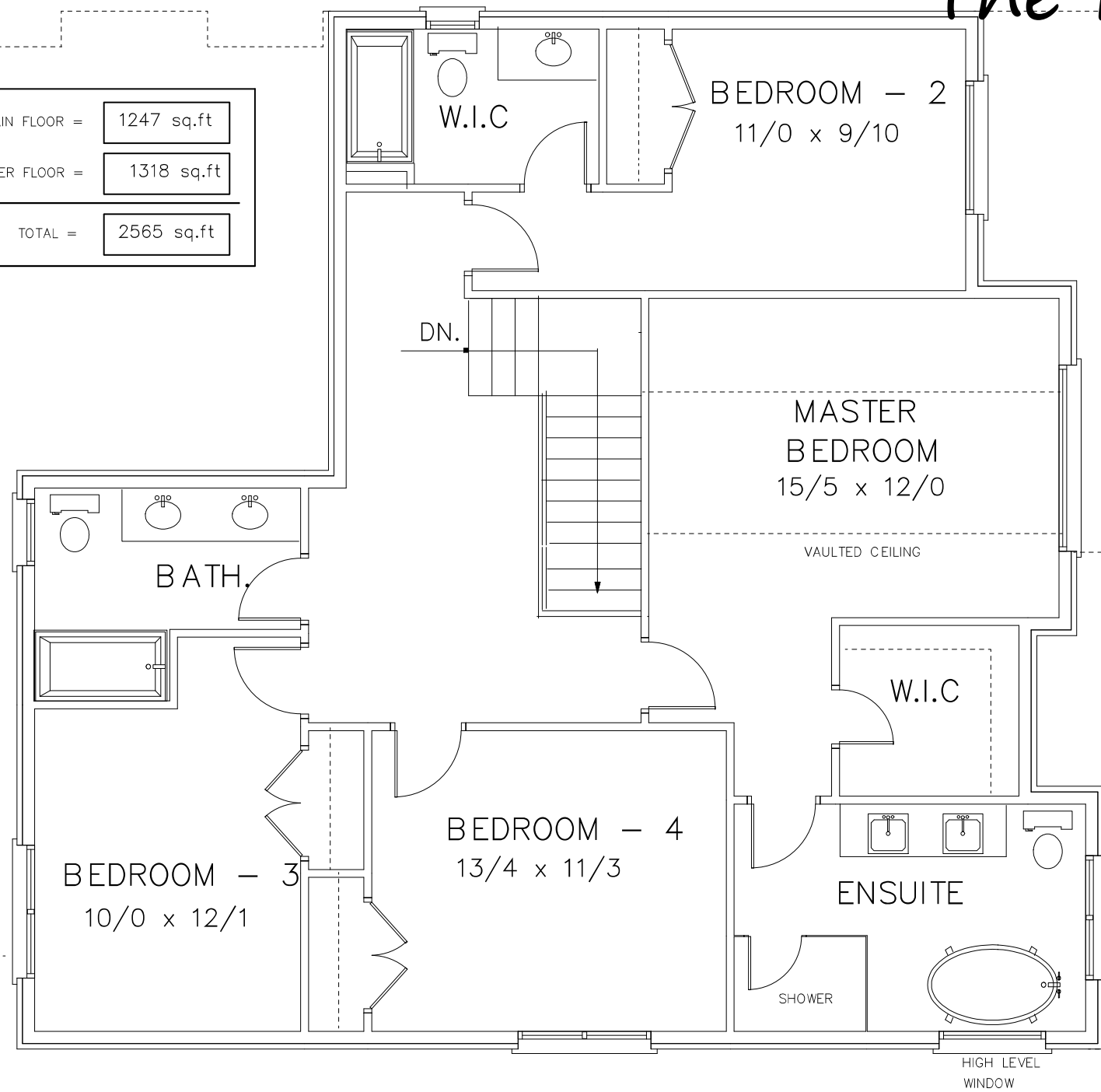
The Player



MAIN FLOOR PLAN

The Player

MAIN FLOOR =	1247 sq.ft
UPPER FLOOR =	1318 sq.ft
<hr/>	
TOTAL =	2565 sq.ft



UPPER FLOOR PLAN